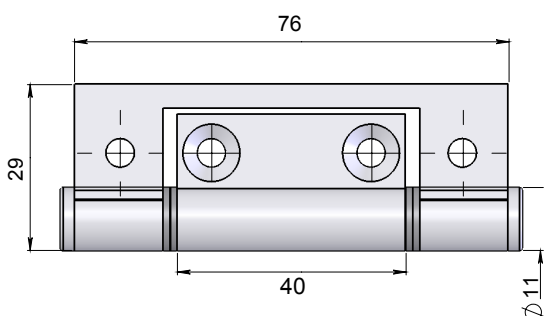


ALUMINIUM SMALL INTERFOLD HINGE

Code No. A 176



APPLICATION

- Control cabinet doors, small windows and screens.

SPECIFICATION

- Alloy:** High strength T.6 minimum tensile 254 mpa.
- Pin Dia:** 4mm 304 Stainless Steel with machined chamfer both ends.
- Bushes:** Flanged nylon.
- Knuckle:** Round
- Endcaps:** Interference fit caps.

FIXING

- Fastening screws not supplied.**
- Pop rivets can be used.

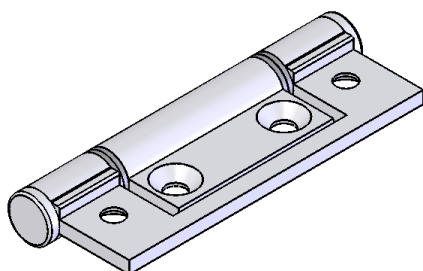
FINISH

- SNA - Satin Natural Anodised
- Black - Black Powder Coat
- White - White Powder Coat

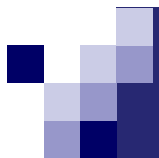


OLD CODE NO.

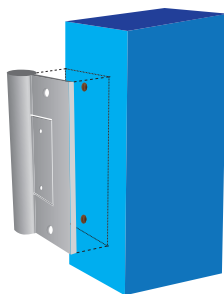
- A 7629



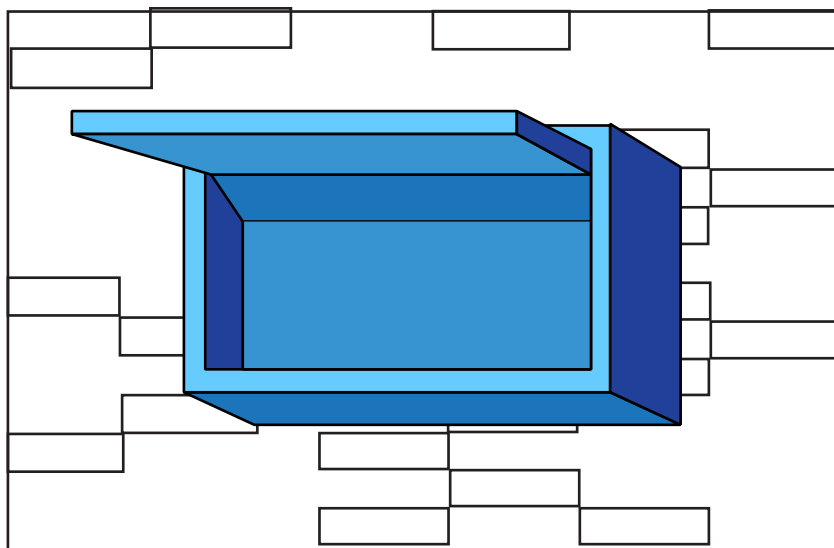
Code No. A 176



INTERFOLD HINGE INFORMATION



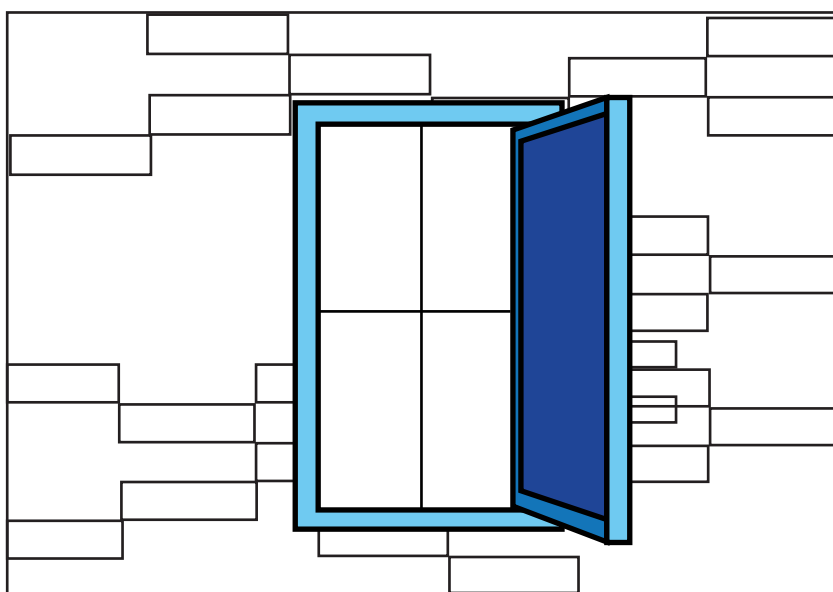
Pre-drill and Mount



Control Cabinet



Closed Door Top View



Window Fly-screen